

A PLAT OF PINEAPPLE PLANTATION PLAT TWO, A P.U.D.

BEING A REPLAT OF A PORTION OF SECTION 20, TOWNSHIP 37 SOUTH,
RANGE 41 EAST, ST. LUCIE GARDENS AS RECORDED IN PLAT BOOK 1, PAGE 35
OF THE PUBLIC RECORDS OF ST. LUCIE (NOW MARTIN) COUNTY, FLORIDA.

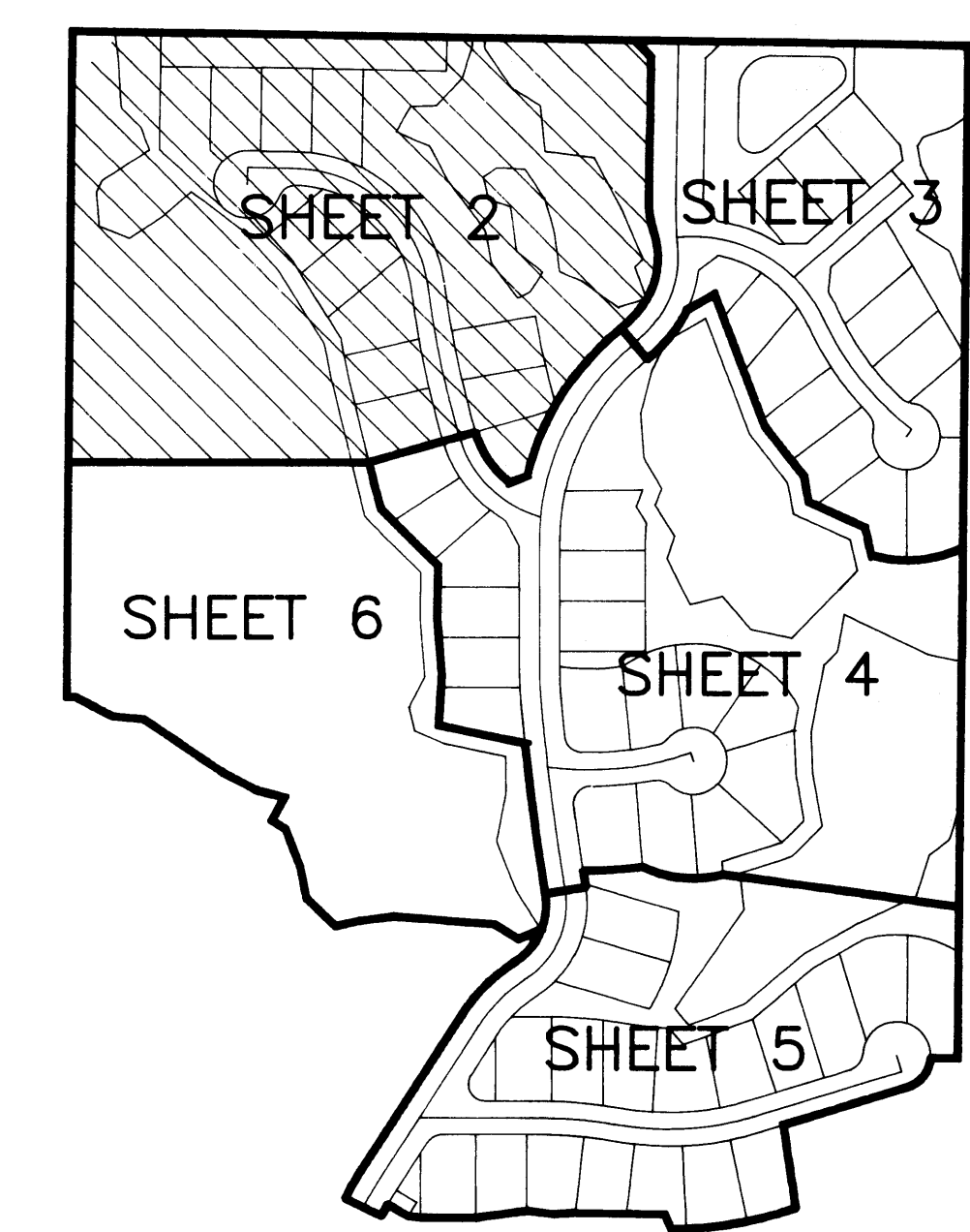
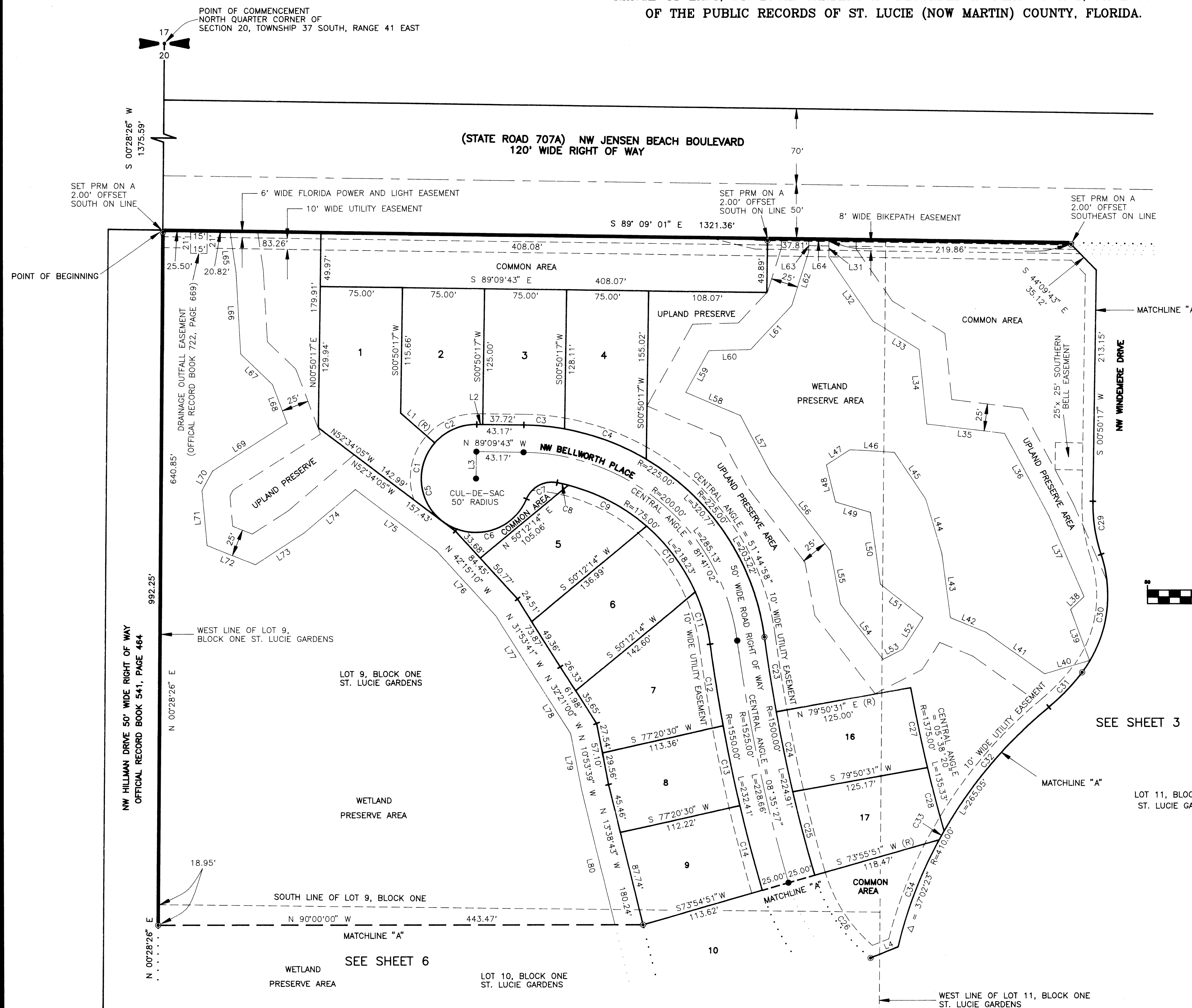
SHEET 2 OF 7

CLERKS RECORDING CERTIFICATE

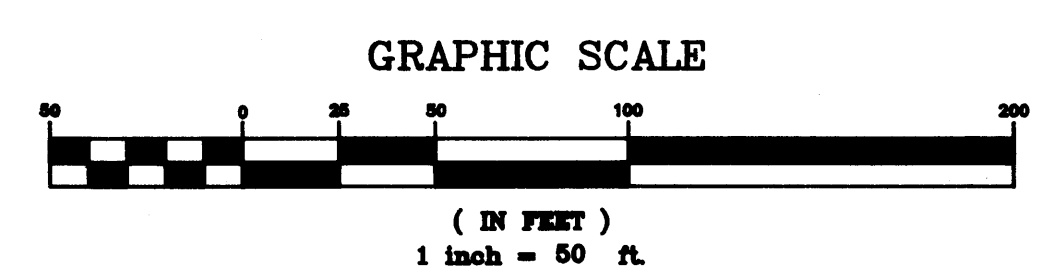
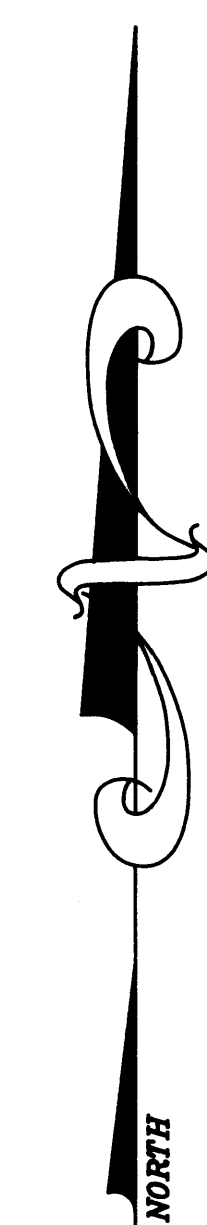
I, MARSHA STILLER, CLERK OF THE CIRCUIT COURT OF MARTIN COUNTY, FLORIDA, HEREBY CERTIFY THAT THIS PLAT WAS FILED FOR IN PLAT BOOK 1, PAGE 26, MARTIN COUNTY, FLORIDA, PUBLIC RECORDS, THIS 26th DAY OF Feb 1998.

Marsha Stiller
MARSHA STILLER, CLERK OF THE CIRCUIT COURT
MARTIN COUNTY, FLORIDA
FILE NUMBER 219770 BY *Janny Copus*
DEPUTY CLERK

SUBDIVISION PARCEL CONTROL NUMBER



KEY MAP
NOT TO SCALE

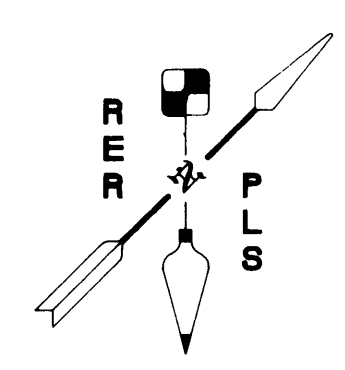


NOTES

1. THE SURVEY BEARINGS SHOWN HEREON ARE BASED ON THE EAST LINE OF U.S. HIGHWAY NUMBER ONE SECTION 20, TOWNSHIP 37 SOUTH, RANGE 41 EAST, BEARING N 18°41'27" W.
2. THERE SHALL BE NO BUILDINGS OR OTHER KIND OF CONSTRUCTION OR TREES PLACED ON DRAINAGE EASEMENTS.
3. THERE SHALL BE NO BUILDINGS OR OTHER PERMANENT STRUCTURES PLACED ON UTILITY EASEMENTS.
4. WHERE DRAINAGE EASEMENTS AND UTILITY EASEMENTS CROSS, DRAINAGE EASEMENTS TAKE PRECEDENCE.

LEGEND

- - DENOTES P.R.M. (PERMANENT REFERENCE MONUMENT)
- - DENOTES P.C.P. (PERMANENT CONTROL POINT)
- (R) - DENOTES RADIAL LINE
- R.O.W. - RIGHT-OF-WAY
- NOT TO SCALE
- Δ - CENTRAL ANGLE
- R - RADIUS
- L - ARC LENGTH



ROLAND E. ROLLINS
PROFESSIONAL LAND SURVEYOR
2119 SOUTHEAST SUNFLOWER STREET
PORT ST. LUCIE, FLORIDA 34952
561-398-1509